

# Ecolieu Ferme du bout du monde Arlon



June 2026



# The Place

We are cultivating a place where you can reconnect with the earth and with yourself. A place where every action nurtures your ability to take action for the future. Our visitor farm invites you to explore resilient practices, share your ideas and co-create practical solutions.

La Ferme du Bout du Monde was founded in 2020 as part of a collective effort to reinvent our relationship with the land and time. Based in a unique eco-community, we bring together a community of residents and nomads, an agroecology training centre and a retreat centre for personal and collective renewal, all focused on experimentation and shared reflection.

Our commitment goes beyond theory: we cultivate food and energy self-sufficiency, develop agricultural, craft and artistic activities, and transform every daily task into a living workshop.

Our strength lies in this integrated approach to sustainability: here, we do not merely teach ecological change; we bring it to life every day.

Within a community of residents, the convergence of ancestral knowledge and low-tech innovations creates fertile ground where learning takes place through hands-on experience. Every harvest, every encounter with the animals, every observation of the natural world becomes an opportunity to test solutions, share our discoveries and build bridges between generations. Through this immersive adventure, we are building a model of resilience that can inspire and support other communities, here and elsewhere.

# Training Rooms



## Activity Room (36 m2)

Projector, whiteboard (pens and paper not provided), portable sound amplifier, school-style green board available (1.2 x 1.8 m), extensive library on agroecology, ecovillages, permaculture and spirituality/social change available for consultation on site, 10 meditation cushions  
20 chairs

# Training Rooms



## Veranda (54 m<sup>2</sup>) and terrace (30m<sup>2</sup>)

Can be used as a breakout space, for breaks and meal breaks

Tables for 25 people

Basic catering equipment (plates, cups, mugs, cutlery, kettle)

Sofas

# Outdoor Spaces



## **Garden Shed (38 m2)**

Complete set of garden tools and equipment  
Outdoor tables and benches for 20 people  
Workshop space

# Outdoor Spaces



**Large courtyard** for gatherings and parties, with a carport/garage area and a community café (from September 2026)

# Outdoor Spaces



**Garden** (focus on medicinal plants and biodiversity); orchard accessible by appointment only (animals present). Greenhouse usually not accessible.

There are currently over 150 varieties of perennial plants grown on site, plus around 50 annual plants depending on the season. We have recorded 145 different species of wild pollinators since 2021.

# Outdoor Spaces



We have a large social space with the possibility of making a campfire.

# Outdoor Spaces



We have a large social space with the possibility of making a campfire.

# Outdoor Spaces



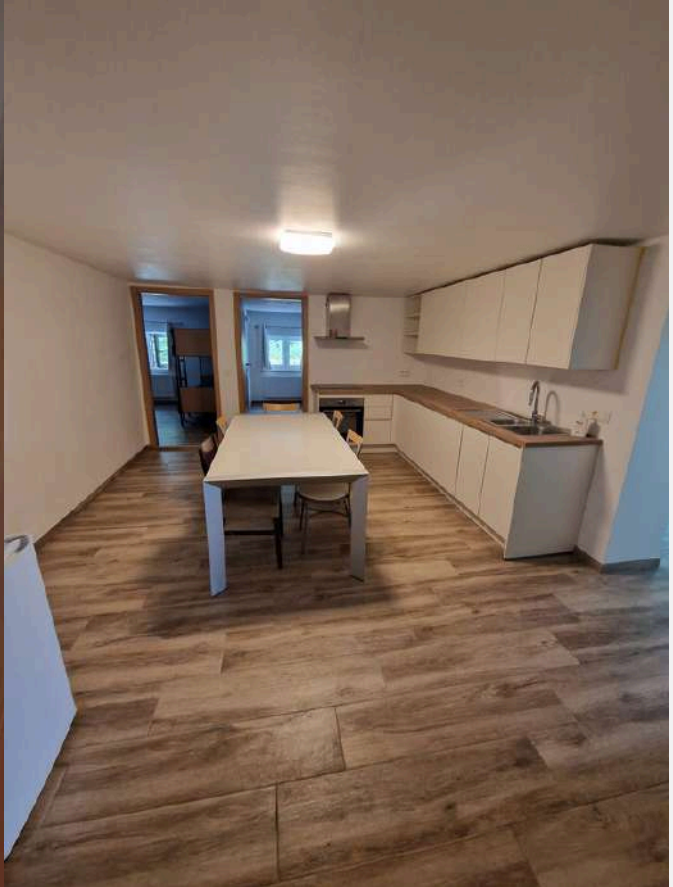
Dry toilets

# Outdoor Spaces



**Playground** includes pirate ship, trampoline and sandbox.

# Lodgings



Guest sleeping quarters

# Lodgings

From 2026, La Ferme du bout du monde will be hosting residential training courses. We can accommodate a minimum of 12 and a maximum of 16 participants per course, plus one trainer. Accommodation is provided in the main house.

## Apartment

12 people (bunk beds) in 3 rooms sleeping 6, 4 and 2 respectively  
fully equipped kitchen

## Bedroom 1

4 people (1 bunk bed, 2 single beds)

## Bedroom 2a

3 people (1 double bed, 1 single bed)

## Bedroom CC (from January 2027)

2 people (double bed)

**Community café** (available end of 2026, currently being renovated); in the meantime, we can provide a private room with a double bed for one trainer.  
2 people (sofa bed)

3 bathrooms in the house, camping showers & dry toilets outside to avoid overloading our septic tank system; it is necessary to use the dry toilets as much as possible and limit showers.

An agreement will be signed between Ferme du bout du monde asbl and the tenant.

Bath towels and tea towels must be brought by participants. Biodegradable soap/shampoo and bedlinen will be provided.

'Quiet Hours' must be observed between 9 pm and 6 am, but a space for gatherings around a campfire is available in the garden.

La Ferme du bout du monde is a drug-free zone.

There are children and animals on site, and we cannot accommodate guests accompanied by pets that are not assistance animals.

Unfortunately, our site is not wheelchair-accessible, as the old house is spread over several levels.



The meals provided by the farm are, at the very least, organic and vegetarian, and as seasonal as possible. We cook gluten-free, but cannot guarantee that our meals are completely free of traces of allergens.







**ferme  
du bout  
du monde**

220, avenue du bois d'Arlon  
6700 ARLON  
+352 691 643 124

[info@fermeduboutdumonde.org](mailto:info@fermeduboutdumonde.org)  
[www.fermeduboutdumonde.org](http://www.fermeduboutdumonde.org)